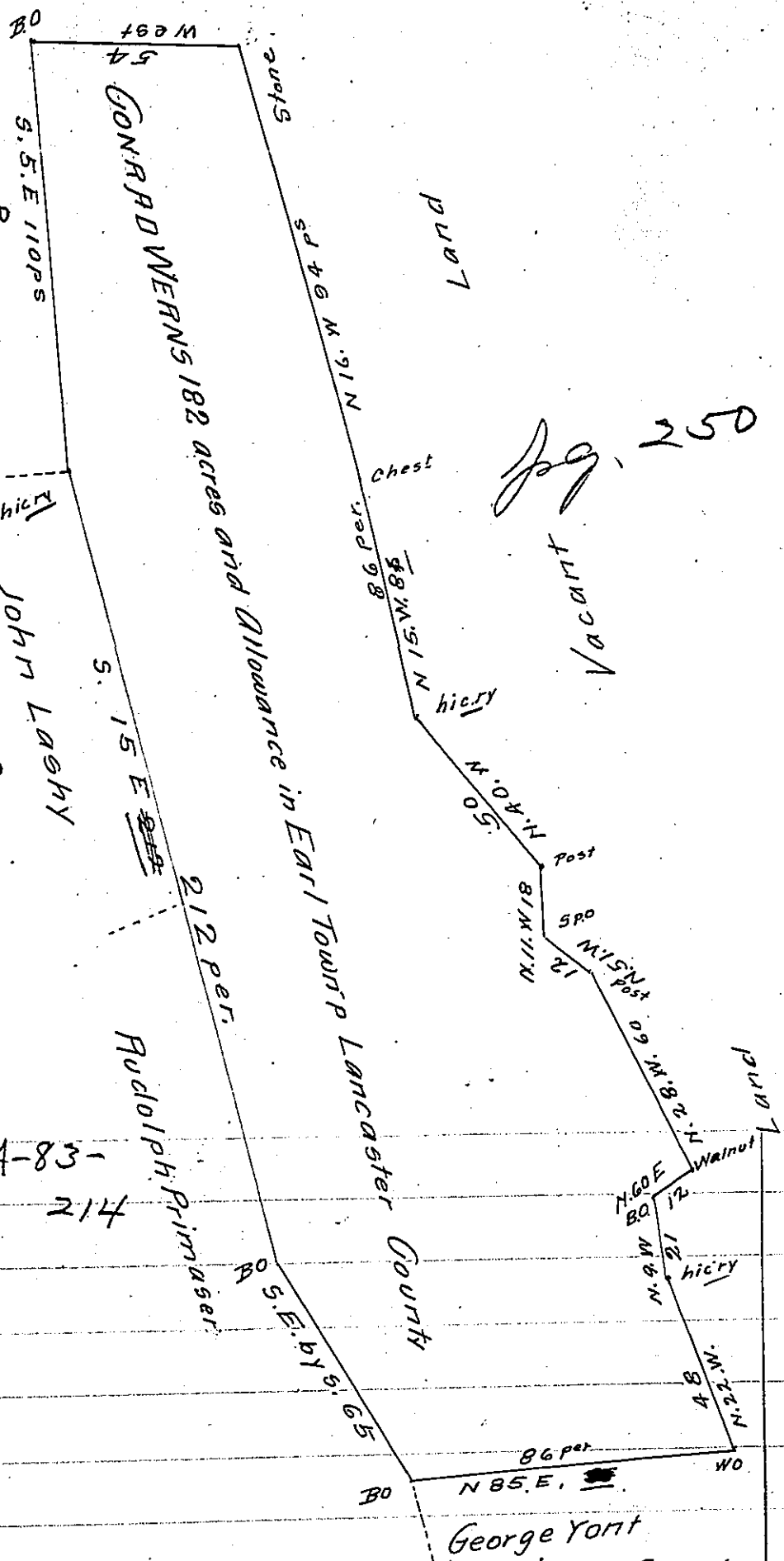


pat. -
A-20-100

C-105-
300

A-83-
214

Fig. 250



A Draught of Conrad Werns - situate in Earl Township in the County of Lancaster Containing One Hundred and Eighty Two acres and the allowance of six acres p. Cent for Roads & Highways. By Virtue of the Honble the Proprietors' Warrant dated the fifteenth day of February 1748 Survey'd the 24th day of May 1751

By Tho. Cookson D.S.

To Nicholas Scull Esq^r
Surveyor General.

IN TESTIMONY that the above is a copy of the original remaining on file in the Department of Internal Affairs of Pennsylvania, made conformably to an Act of Assembly approved the 16th day of February 1833, I have hereunto set my hand and caused the Seal of said Department to be affixed at Harrisburg, this first day of May 1907

Isaac B. Brown
Secretary of Internal Affairs.